

BLK – Barely Levitzky Kassif Architects & Town Planners (1989) Ltd.

			LEADING EXECUTIVES Eli Rubinstein Michael Ziegel	ESTABLISHED 1989	LINE OF BUSINESS Architecture and Town Planning
Uri Barely <i>Partner</i>	Coby Levitzky <i>Partner</i>	Motti Kassif <i>Partner</i>			

BLK – Barely Levitzky Kassif Architects & Town Planners (1989) Ltd. is an international architecture firm headquartered in Israel, where it is one of the country's largest and leading firms. The firm was formed in 1989 by Uri Barely, Coby Levitzky and Motti Kassif, each of whom is a highly experienced and creative architect with a comprehensive understanding of the design, construction and business needs of their worldwide clients.

Areas of Expertise

BLK has extensive experience in planning projects of the largest scope including high-rise buildings, complete residential neighborhoods and major housing and vacation home developments, mixed-use projects, office buildings, commercial complexes, shopping malls and power centers, high-tech and industrial facilities, life-science design, tourism and leisure recreation complexes, healthcare, educational and other public buildings. The firm's services encompass town planning, master plans, outline plans, town building plans and layout plans. In some projects, BLK acts as the leading architect on behalf of the authorities.

Highest Standards of Craftsmanship

BLK, which offers leading real-estate developers throughout the world the highest standards of craftsmanship, comprises more than 50 architects backed up by an administrative team. The firm has undertaken the largest and most complex projects with the highest level of service in the shortest possible time. BLK utilizes the latest computerized systems and equipment, providing drawings in dwg or dxf formats.

Serving Clients Worldwide

BLK serves major developers worldwide, usually acting overseas in joint ventures with leading architecture companies. The firm is undertaking major projects in Europe and the US and is planning activities in the Far East. In Israel, the firm serves public companies, private developers and government authorities, and cooperates with international architects such as Richard Meier & Partners, while I.D.G. is a partnership owned jointly with Rani Ziss Architects.

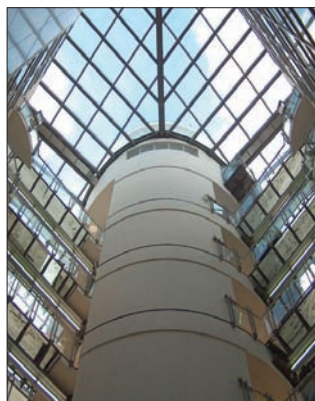
Residential Developments

BLK has planned more than 30,000 housing

units built in Israel and worldwide, of which 24,000 are high-density complexes and 6,000 are low-density buildings. The firm's 2,400 residential units built in 12 phases in the Osielde Europeski project in Krakow were chosen as the best residential project of the year in Poland in 2003 and 2006, while the Washington project in Bucharest was selected as the best residential project of 2005 in Romania, and the Center Point project was chosen as the best of-fices project of 2006 in Hungary. The company has planned complete neighborhoods in Israel of which the best known is the prize-winning, "Neve Savyon" in Or-Yehuda, including 2,536 housing units of various types as well as public and commercial facilities.

High-Rise Projects

BLK has extensive experience in planning high-rise projects. These include: City Tower, Ayalon Tower and Hillcrest Tower along Ramat Gan's Ayalon edge; "Kfar Hayam", a 28-storey 5-star Sheraton hotel. Most recently, the firm designed the exclusive 46-floor Rothschild residential tower in Tel Aviv in cooperation with Richard Meier & Partners (RMP).



Address: 11 Tuval St.,
Ramat Gan 52522

Tel: 972-3-6123040
Fax: 972-3-6123050

E-mail:
blk@blk-arc.co.il

Website:
www.blk-arc.com

Architecture Firms

RANK 2008	Firm	Professional Employees	Partners	Total Employees	Established	RANK 2007
		No.	No.	No.		
1	MYS Architects	123	4	131	2005	1
2	ALEFBET Architects Engineers Planners ¹	94	17	111	1991	2
3	BLK	49	3	56	1989	4
4	Yashar Architects	45	1	54	1956	9
5	Moshe Zur Architects & Town Planners	44	2	51	1978	3
6	Pelleg Architects	44	3	49	1982	7
7	I. Eldar Architects	41	1	46	1972	5
8	Tito N.S. Architects	38	1	47	1980	10
9	Dagan Mochly Architects	36	1	42	1996	6
10	Lerman Architects	35	2	38	1970	8

¹ Ranked only according to the number of architects employed.



Decide with Confidence

Dun's100 2008
Israel's Largest Enterprises ∞